

SmartGuide® 2

Technical Data

Processor: Quad core, 1.28 GHz

Operating system: Android 10

Dimensions: 153 x 75 x 10 mm

Weight: 180 g

Display: 5.7", 720 x 1440 HD

WLAN: 802.11 b/g/n

Bluetooth: 4.2

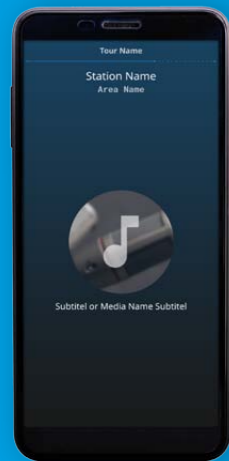
Rom/Ram: 16 GB/2 GB

Sensors: G-Sensor, Proximity Sensor, Ambient Light Sensor, Magnetic field Sensor, Gyroscope

GroupGuiding: MEDER Transceiver module 823-829 MHz

Sockets: 3,5 mm for earphone, Micro USB 2.0, Typ C

Camera: 8 MP



Travel to distant countries, explore foreign cultures or discover art in museums. **MEDER** supports the requirements of group and individual travelers with its vast know-how gained in over 40 years.

Sophisticated communication technology and perfectly adjusted software make every trip a lasting experience, not only for the tour operator but also for the tourists!

MEDER
CommTech



GEMEINSAM ERLEBNISSE SCHAFFEN

www.meder-commtech.de

See, listen, wonder:
The **SmartGuide 2** fulfills all the wishes
of modern visitor information.

MEDER SmartGuide® 2

CREATING EXPERIENCES TOGETHER
Wireless Guiding Systems

Our service does not stop after the sale! Professional after-sales support, continuous product improvements as well as our own repair department make **MEDER** CommTech an „all-round carefree provider“.

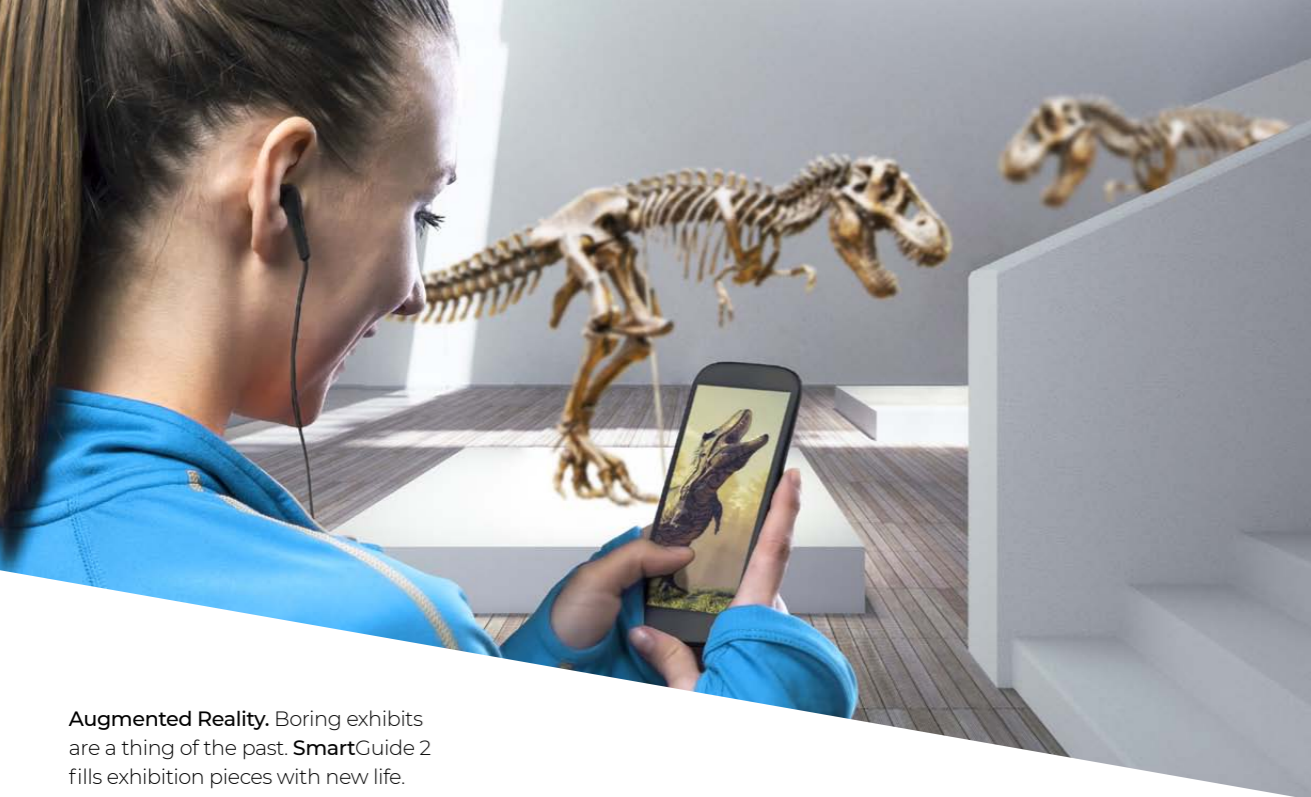
MEDER CommTech GmbH

Robert-Bosch-Straße 4
78224 Singen / Deutschland

Tel.: +49 (0) 7731 911 322 0

Fax: +49 (0) 7731 911 322 99

info@meder-commtech.com



Augmented Reality. Boring exhibits are a thing of the past. **SmartGuide 2** fills exhibition pieces with new life. With images, texts and effects, museum visits will turn into unforgettable events.

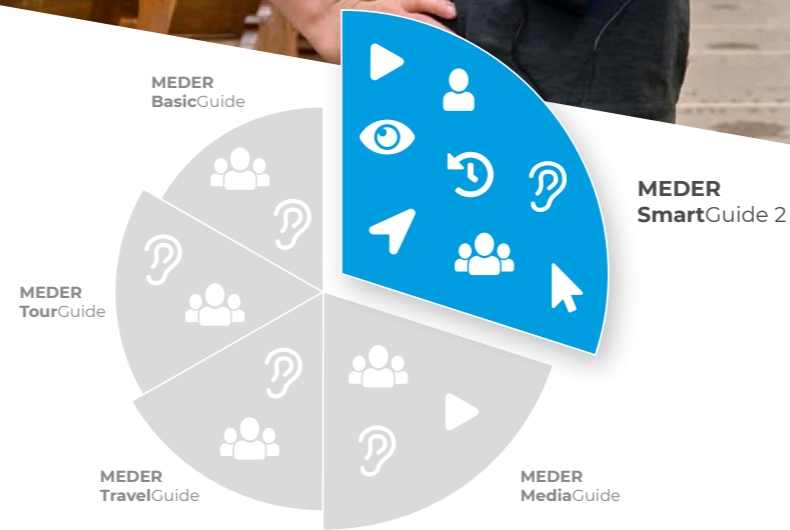
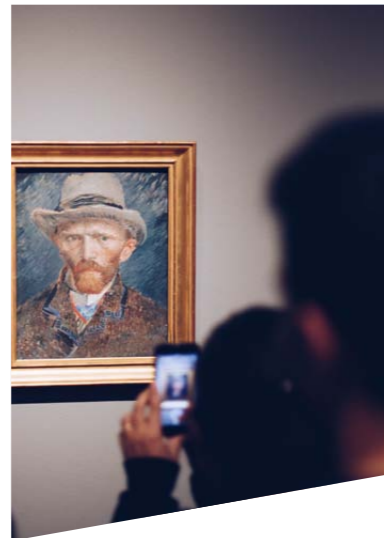


Our **MEDER SmartGuide 2** has a robust built and is intuitive to use, especially designed and produced for challenging tours in museums and factories.

Group tours with a guide are fun and informative.

SmartGuide 2 also allows you to explore the museum, city or factory **on your own**.

Individually accessible **videos, pictures & audio files** make your tour particularly special!



Our top product „**SmartGuide 2**“ combines all features available on the market of guiding systems. This ensures a satisfying result for guided group excursions as well as for individual museum visits and for factory tours.

- Audio function
- Suitable for groups
- Self-guided
- Visual support
- Individual tour
- Interactive
- Indoor and outdoor navigation
- Audio content by triggering



Desktop charging station
Suitable for up to 40 devices
Available for all device types



Charging rack
Suitable for up to 120 devices
Available for all device types

Features

Combines group guide, audio guide and visual guide in one device

Customizable information system

Efficient, diverse and varying design options for Guided tours and visits

Visual support of the guides through built-in touchscreen

Digital voice transmission

Bluetooth, GPS and WLAN capable

Navigation via GPS or beacons

High battery life

Charger rack 2-fold, 6-fold and 16-fold, customer-specific cascadable

Loading via pogo-pins

Memory expandable via SD card

Automated content transfer Possible in the loading rack

Content can be imported in all common formats

Adaptation to corporate design possible

Customized functions possible

Screwed back

Robust housing

Integration into booking or Information systems possible

Updates possible via the charging station

Camera for scanning codes or for augmented reality applications