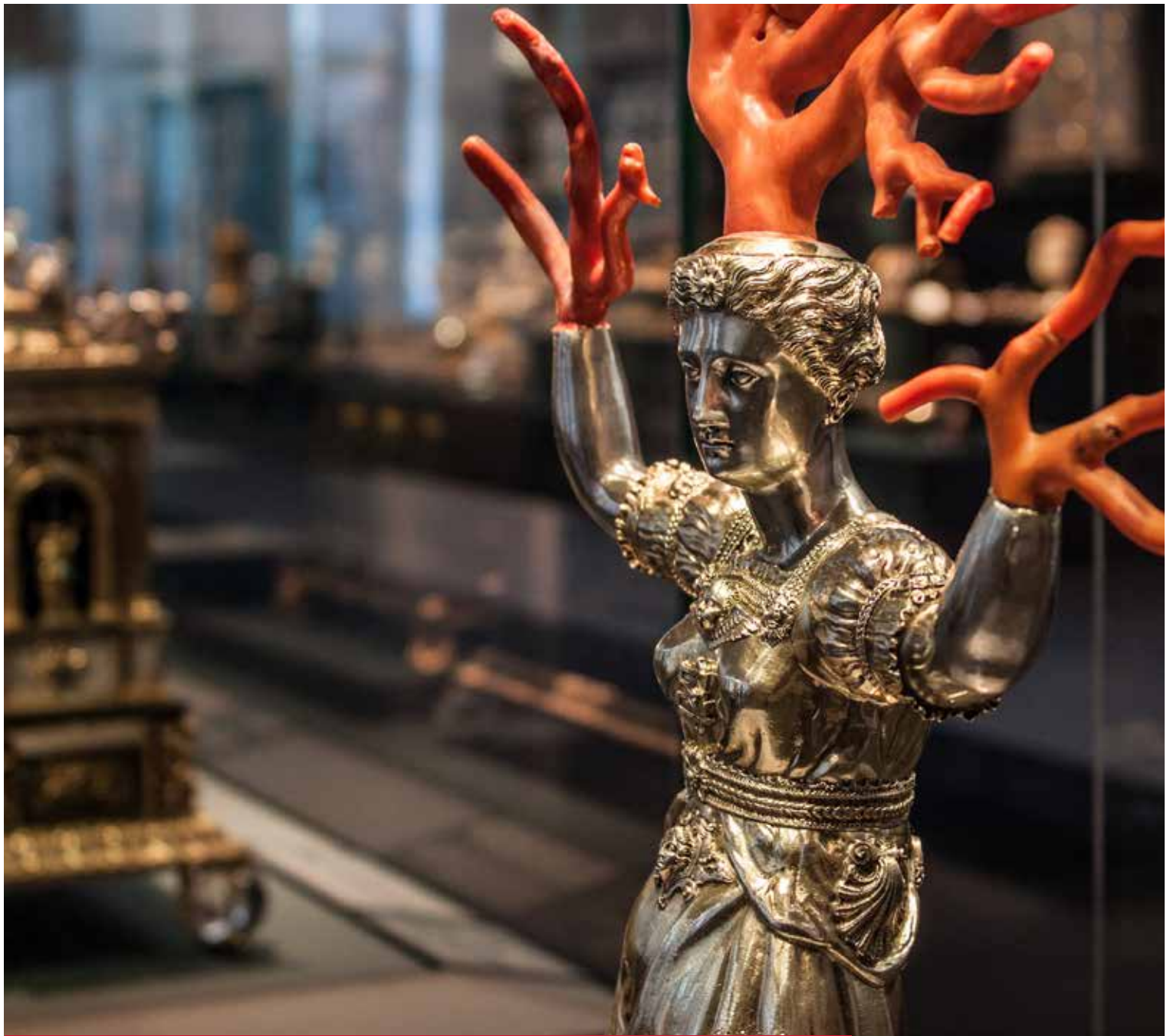


robotron*Daphne
The Collections Database





Challenges

Museums today are facing greater challenges than ever before. Not only must collections be documented and presented in a modern, accessible way, but the linking of this information with public networks has also become standard practice. Provenance research has become an increasingly demanding task that ties up resources in order to provide conclusive data on the origin of artistic or cultural assets. Furthermore, all this must be implemented as efficiently as possible, without extensive, time-consuming training and with ever-shrinking numbers of personnel from diverse backgrounds.

This is where **robotron*Daphne** comes in. This innovative collections management system has been developed especially to meet these needs and to comprehensively assist scholars, collections managers, researchers, photographers, registrars and curators in their everyday work. Especially in the new, third version of **robotron*Daphne**, the programme offers functions that are adapted to the specific needs of museum staff.

Solutions

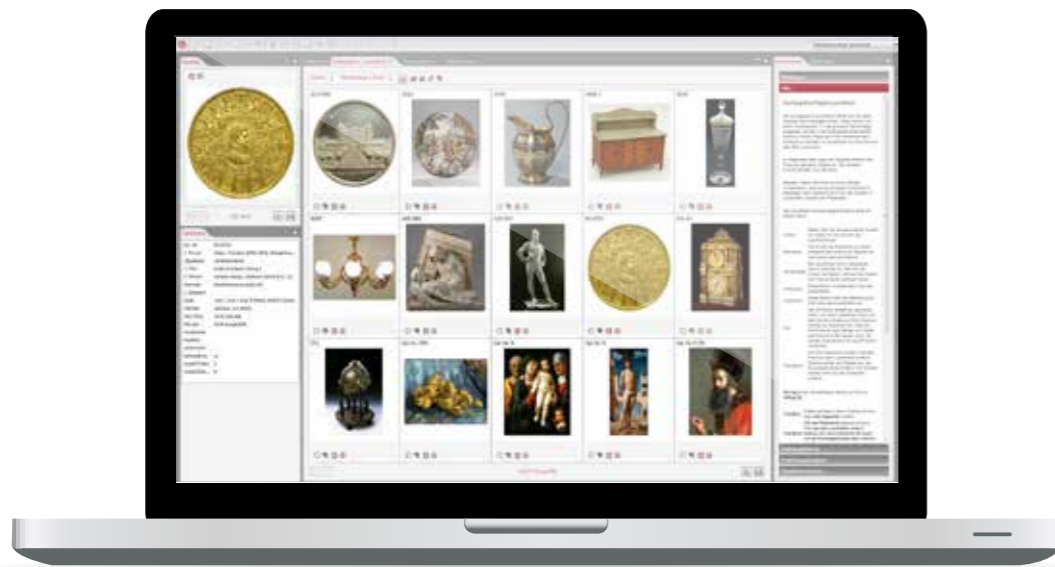
With **robotron*Daphne**, a collection management system has been created that enables the recording and management of large collections in an exceptionally efficient way. It combines the basic philosophy of maximum simplicity and at the same time maximum performance with the elegance of a modern application. The intuitive handling allows each museum staff member to productively record objects in a short time.

Modular structure

By using special data records and/or new object categories, **robotron*Daphne** can easily be expanded module by module. There are already templates for the object categories "interviews", e.g. for contemporary witness interviews, "works", "productions" and "performances" for theatres and operas, as well as numerous other special data records.

System requirements

A standard PC or laptop with the operating system Microsoft Windows or Linux is all that is necessary to install **robotron*Daphne**. In order to connect to the database, a data line must be available, either via the intranet or the Internet. If you are not using the Robotron computing centre, the technical requirements will depend on several factors. We would be glad to meet with you in person to discuss these requirements.



Presentation of search results in the light table



effective -
time-efficient cataloguing of objects and
clear support of business processes

Cataloguing objects

- ▶ Single form to catalogue objects
- ▶ Data fields grouped into subject areas corresponding to the cataloguing sequence
- ▶ Rapid data acquisition and copy function for efficient cataloguing
- ▶ Editable help texts

Media-grabber

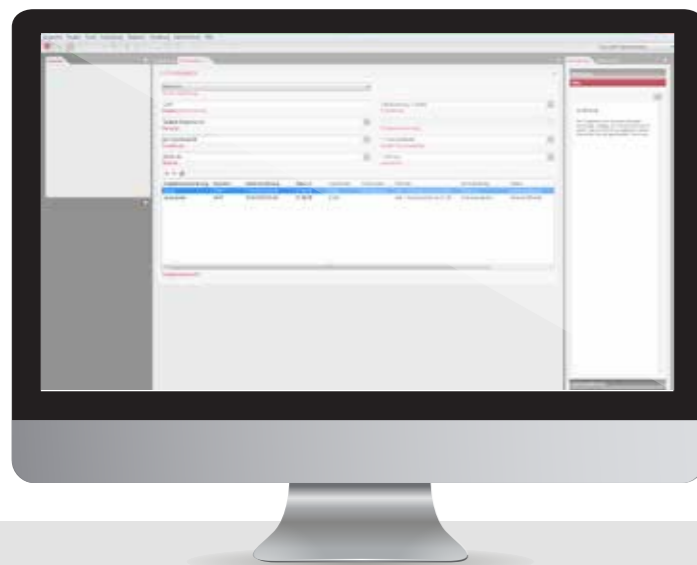
- ▶ Easy uploading of large quantities of digital assets such as photos, videos or documents into **robotron*Daphne**
- ▶ Managing and merging of any number of digitized media (documents, photos, or audio and video files) into one object
- ▶ Separate cataloguing of objects and photos or documents
- ▶ Presentation of flip-through manuscripts and 3D animations

Mass changes

- ▶ A useful complement to the data editing tools which allows the user to efficiently edit any number of records in a single step
- ▶ May be used in all fields of the basic data record as well as in fields of special data records with various options (add, replace, etc.)

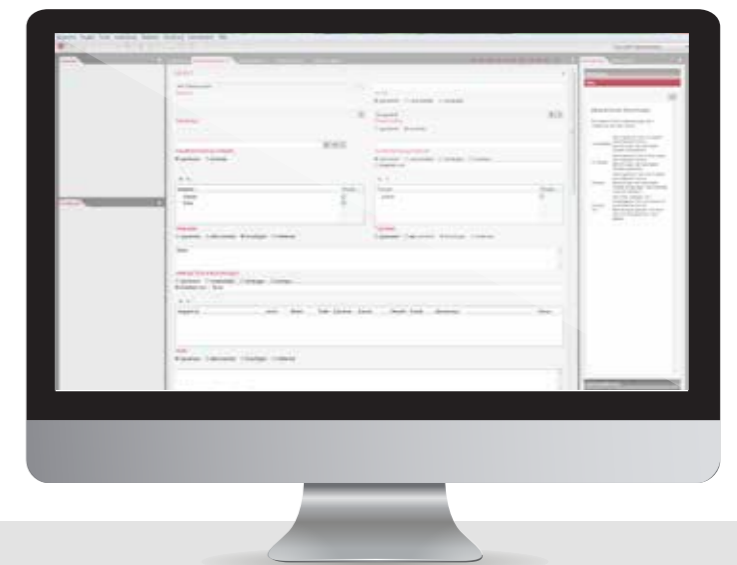
Reporting and interfaces

- ▶ Predefined standard reports (e.g. for Microsoft Excel, Word, OpenOffice, or PDF and XML documents)
- ▶ Creation and integration of individual reports with the help of a report generator
- ▶ Transfer of existing data with the integrated CSV import interface
- ▶ Communication with other databases and portals via the standardized LIDO interface
- ▶ Use of barcodes and QR codes
- ▶ Linked open data interface to the integrated authority file (GND) of the German National Library (Deutsche Nationalbibliothek)



Administrative view of the media-grabber

Mass change screen for the "object" category



convenient –
user-specific screen interfaces



comprehensive –
a single database even for
diverse collections

Internet presentation with *robotron*Daphne@WEB*

- ▶ Individual sharing of objects and photos for publication online
- ▶ Professional presentation of thematically arranged objects
- ▶ Advanced search for various core characteristics
- ▶ Quick and easy searches in a single search field
- ▶ Optimal presentation on mobile devices such as tablets and smartphones
- ▶ Comment function allows visitors to share interesting facts about the object directly with the museum
- ▶ Management of digital reproductions and image rights

Data fields for provenance research

- ▶ Automatic cross-linking of decentralized information with input added later in order to better support provenance research
- ▶ Generation of internal and external dossiers
- ▶ Developed in close cooperation with the professional research team of the Staatliche Kunstsammlungen Dresden

Inquiries

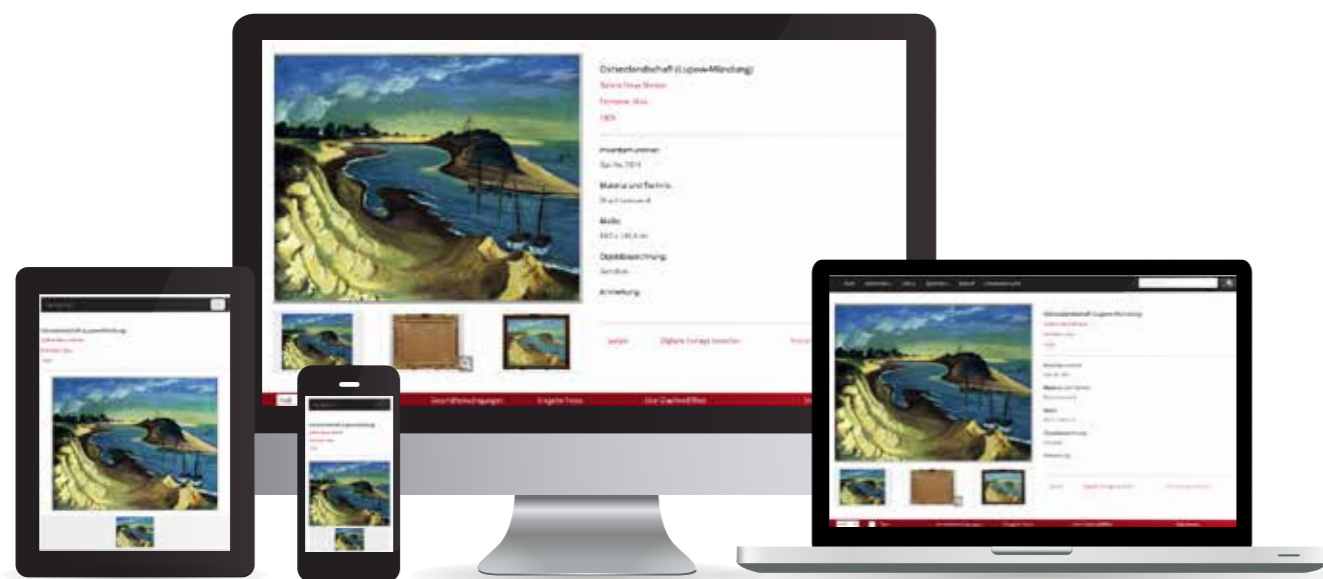
- ▶ Inquiries covering all collected data are possible using standardized research fields and accompanying, freely definable "quotation fields"
- ▶ Replaces inflexible thesauri in favor of logical content
- ▶ Custom terms can be directly assigned to pre-existing terms
- ▶ Search within families of words using synonyms
- ▶ Search results can be saved and logically combined with other searches
- ▶ Search results can be shared with other users

Geo-browser

- ▶ Search and edit geographical information with the geographical user interface

Full-text search

*robotron*Daphne* automatically creates an extensive full-text index after new object data has been entered. This index contains all of the data fields relating to an object as well as all attached documents. This way objects and documents, such as restoration logs, can always be easily retrieved.



Latest Web Technology with various application opportunities



Exhibitions

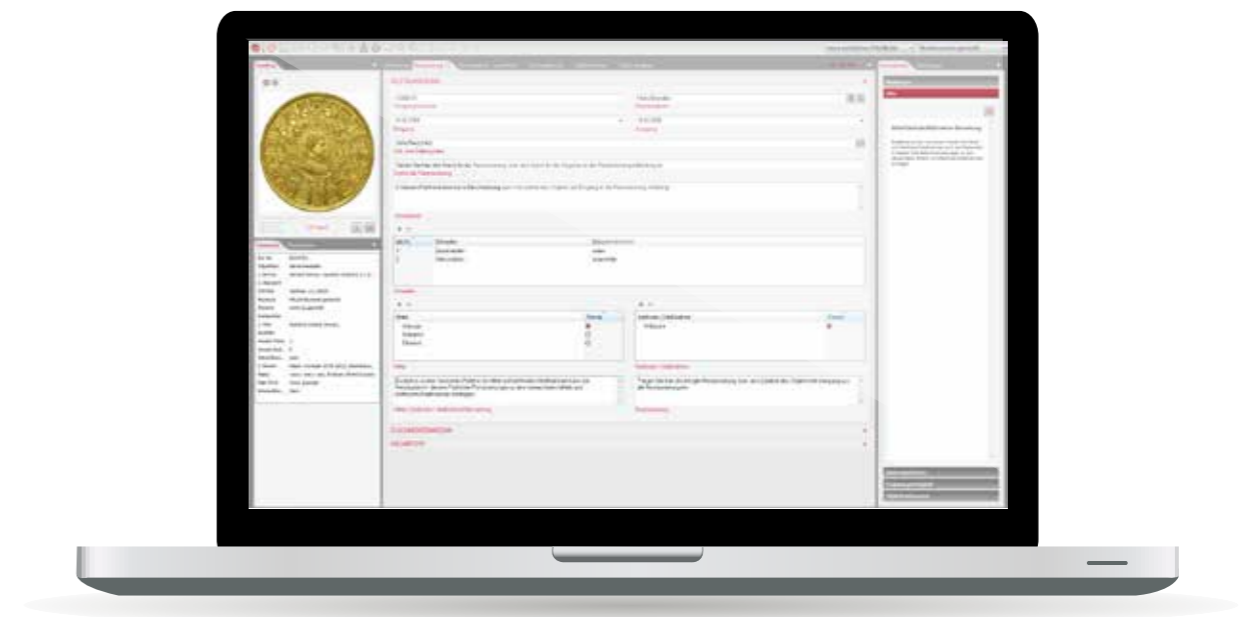
- ▶ Assistance in all steps before, during, and after an exhibition
- ▶ Clear presentation and review of all relevant objects (including loans) in a table, which is adjustable and can be filtered according to your needs
- ▶ Management of all object data required for exhibition, loan, transport, and publication
- ▶ Central storage of photos and documents
- ▶ Generation of all necessary printouts and hand lists as detailed reports, along with a CSV export option

Loan transactions

- ▶ Any selection of objects can be compiled for loan transactions
- ▶ All necessary information regarding lenders, borrowers, costs, restorations/state of preservation, transport, conditions, etc. is assigned
- ▶ Comprehensive checklist with all the data required for processing the loan of each object
- ▶ Loan agreements including lists of objects can be generated upon confirmation that the object(s) is/are available to lend
- ▶ The exhibition module serves as an interface between the curator and the registrar

Restoration

- ▶ All restoration measures and condition assessments are stored centrally within the object record
- ▶ Detailed view documents all the work carried out for any number of restoration treatments per object, including information on means, methods, and damage
- ▶ Readable documents are fully searchable
- ▶ Integrated documentation of literature and sources
- ▶ Documents can be filed in the archive module



Detail mask of a restoration process



proven –
safe management of collections,
no matter how complex



© SKD

Your advantages with robotron*Daphne at a glance

- ▶ Exceptionally efficient cataloguing through intelligent standardization
- ▶ Cataloguing and management in a single window
- ▶ Multilingual capabilities including the Getty's AAT
- ▶ Collection-specific object descriptions in a special data record
- ▶ Reduce costs through joint purchase with other museums
- ▶ Restitution and provenance research
- ▶ Configurable authorization system defines access rights to functions and data
- ▶ Central data storage in an Oracle relational database
- ▶ Browser-based – no client installation necessary
- ▶ **robotron*Daphne** is suitable for museums and collections of all sizes
- ▶ **robotron*Daphne** can be operated from outside the intranet.
For a connection over the Internet, Robotron must simply install a proxy server.

Our service

Consulting, installation, implementation support and training

Robotron will gladly assist you from the very beginning all the way through to implementation.



Adapting to robotron*Daphne@WEB

Robotron can carry out the integration of **robotron*Daphne@WEB** into the respective institution's existing Internet presence.



Data migration from current databases

Robotron takes care of the data migration from your previous systems in order to save you unnecessary maintenance work. Due to our extensive experience in this area we can guarantee a complete migration without any loss of data.



Customizing

Due to the modular structure, customer-specific extensions are possible following consultation with Robotron.



Hosting services

With **robotron*Daphne**, Robotron customers have the benefit of a professional, secure computer center.



Annual customer meeting

Customer meetings as well as the **robotron*Daphne** online forum provide the opportunity for exchanges within the Daphne community.



Personalized assistance

The Robotron team looks forward to hearing from you and will be happy to advise you according to your needs.

Robotron Datenbank-Software GmbH
Stuttgarter Straße 29
01189 Dresden

daphne@robotron.de
+49 351 25859-2920

Dated: 05/2017