

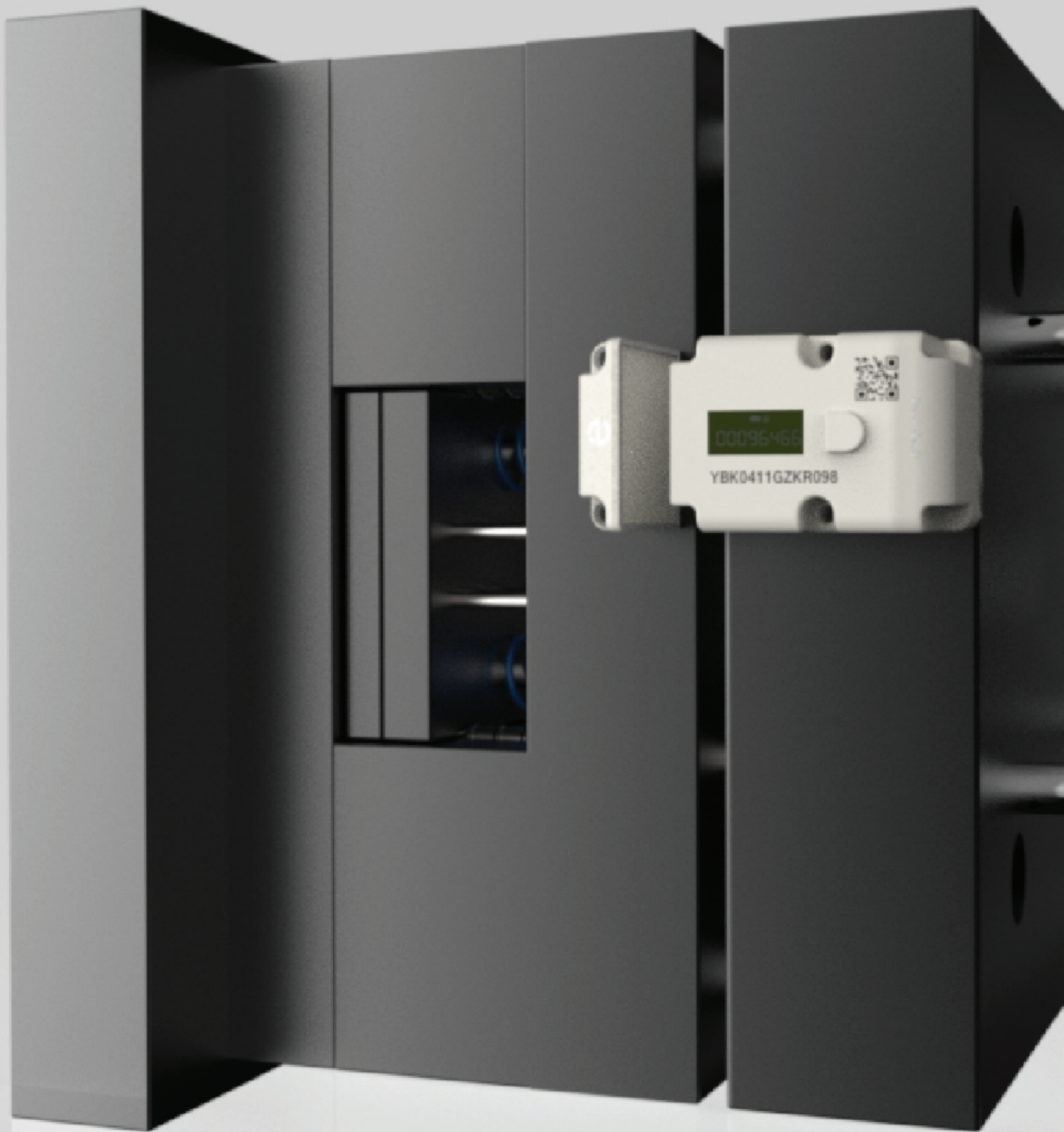


Tooling & Supply Chain Innovation
The eMoldino Solution

www.eMoldino.com

eMOLDiNO

Enhance your Process,
Improve your Visibility.





Shot Count

Cycle Time

Uptime

Temperature

Pressure

Location

Maintenance

Lifecycle

MADE IN KOREA





All-in-one | AI | IIoT

eMoldino End-to-End Solution

eMoldino's industrial, wireless IIoT sensor collects, processes, and analyzes production data to provide useful insights for OEMs, suppliers, and toolmakers altogether.

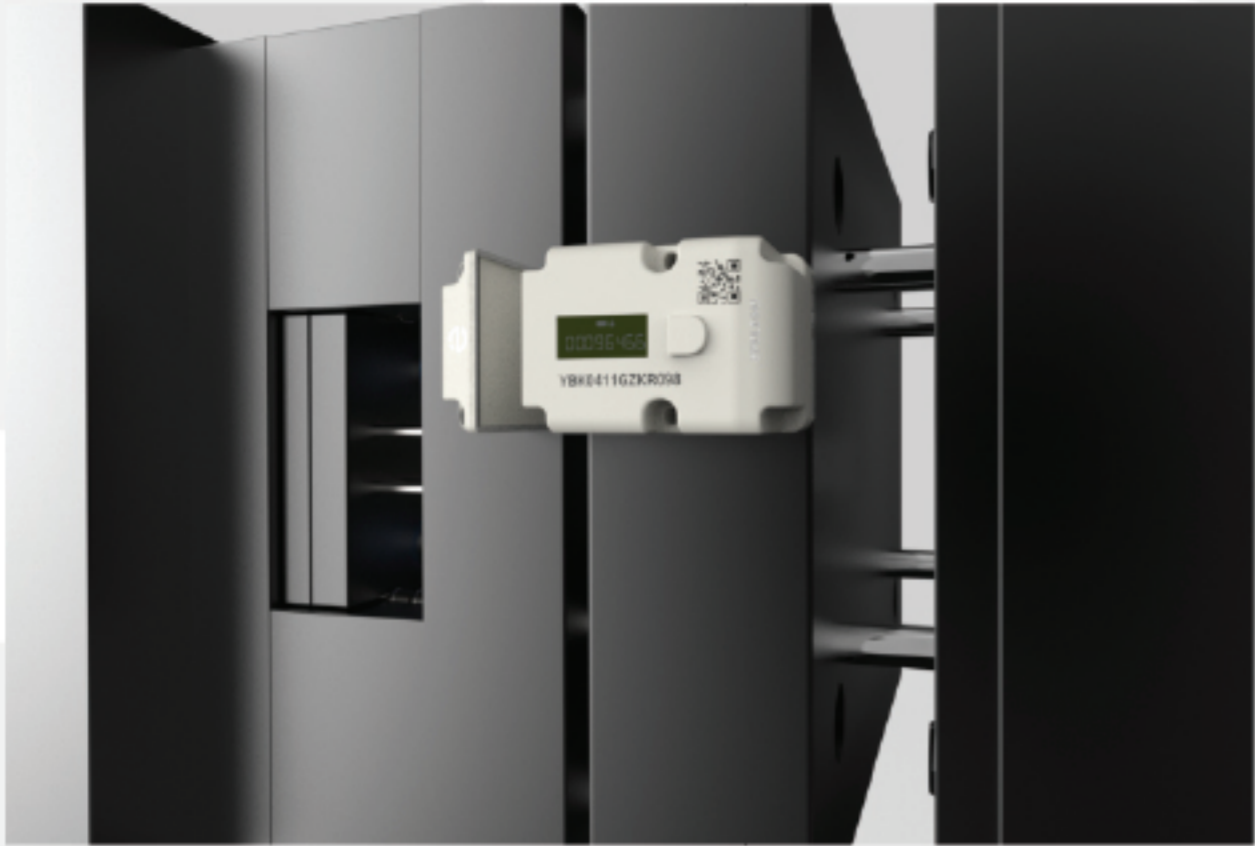
From pressure data points to variations in cycle time, our sensor is capable of accurately detecting tooling data in real-time to provide users with endless opportunities for production optimization and supply chain enhancement.

With 180,000+ devices implemented at 500 individual suppliers at more than 10,000 unique plants, we strive to maintain a global reach while providing clients with a world-class consumer experience. Embedded with traditional core values, eMoldino aims to provide reliability, consistency, and quality service to all its clients.

Industries we serve

- Automotive
- Home Appliances
- Cosmetics
- Med-Tech
- Aerospace
- Consumer Goods

How it Works



Our wireless IIOT sensor both collects and transmits tooling data directly to the eMoldino terminal.



The terminal receives tooling data in real-time and uploads it to our private cloud server.



From there, the data is stored, filtered, and processed within a secure AWS server.



Finally, the system categorizes and analyzes all incoming data from the terminal and provides end-users with analytical production insights.

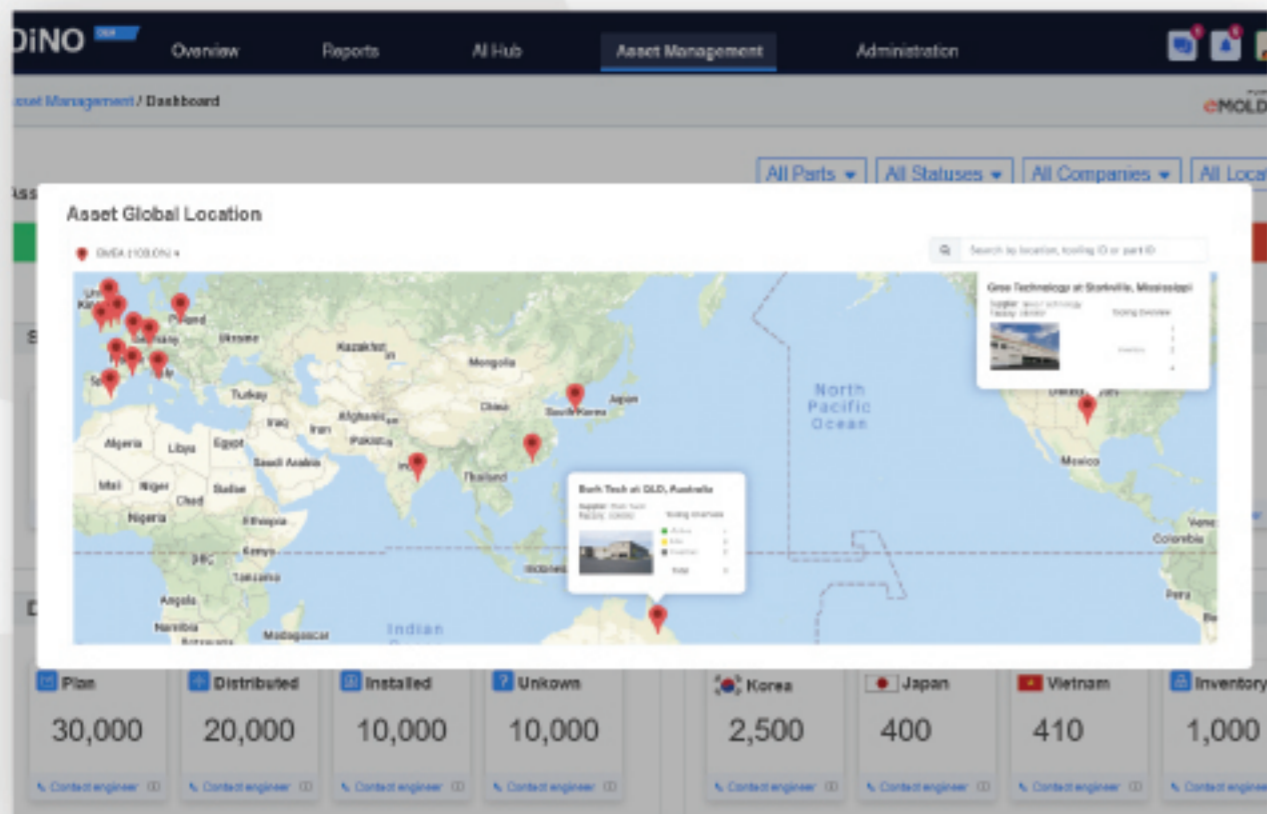


OEMs, suppliers, and toolmakers can now access their stored tooling data at any point in time.



Plant managers and operators can also monitor tooling operations and report bugs & issues from any tablet or mobile device.

eMoldino Solution Features



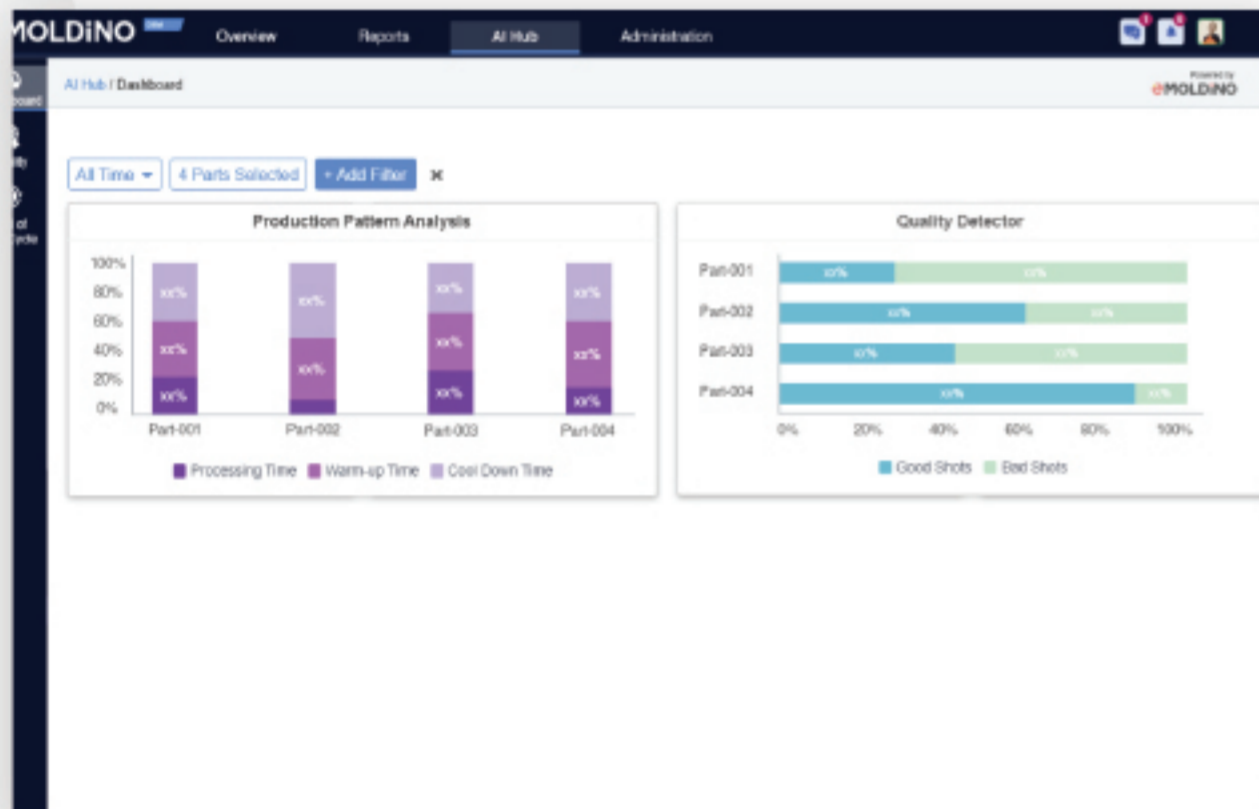
Asset Management

The asset management function displays tooling operational status, lifecycle, distribution schedule, and physical location across the supply chain.



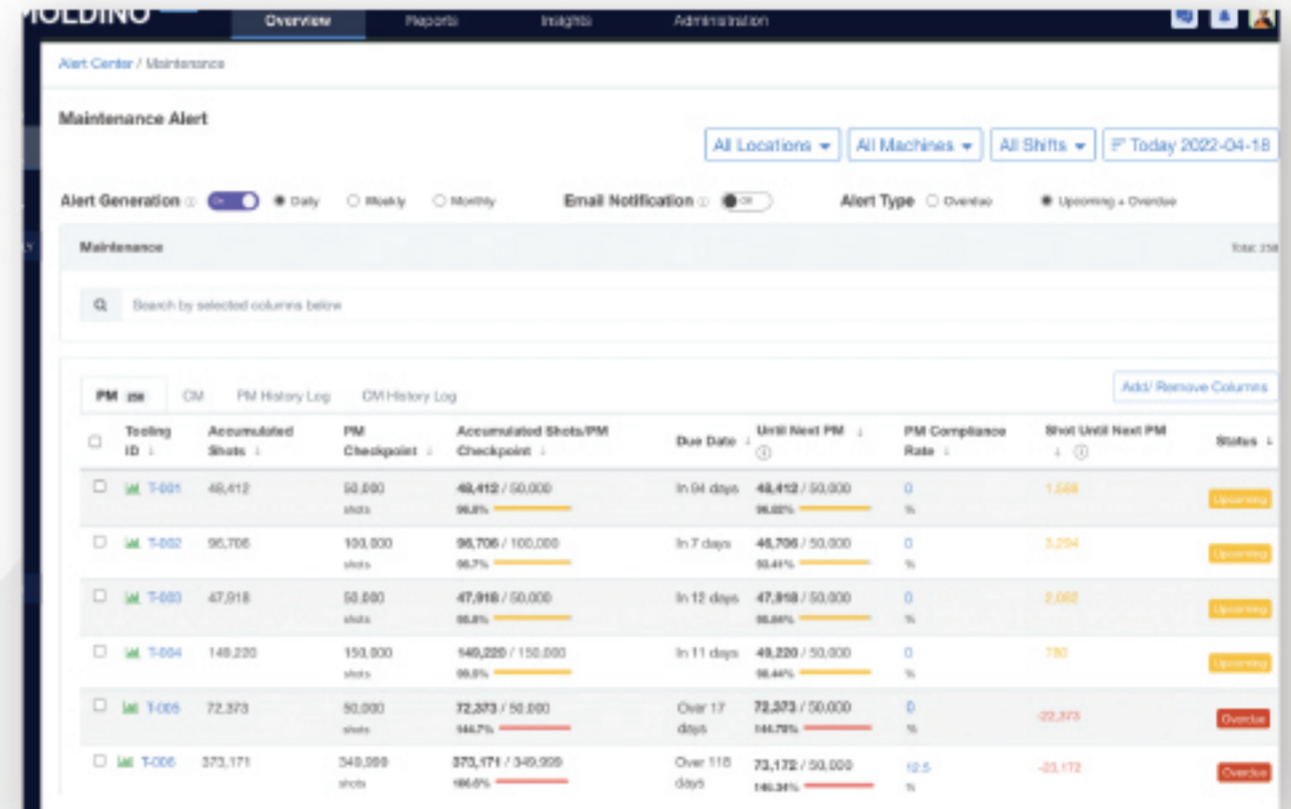
Capacity Management

The production capacity dashboard displays a tooling's actual versus maximum output. Supply chain managers are alerted for any and all potential late part deliveries here.



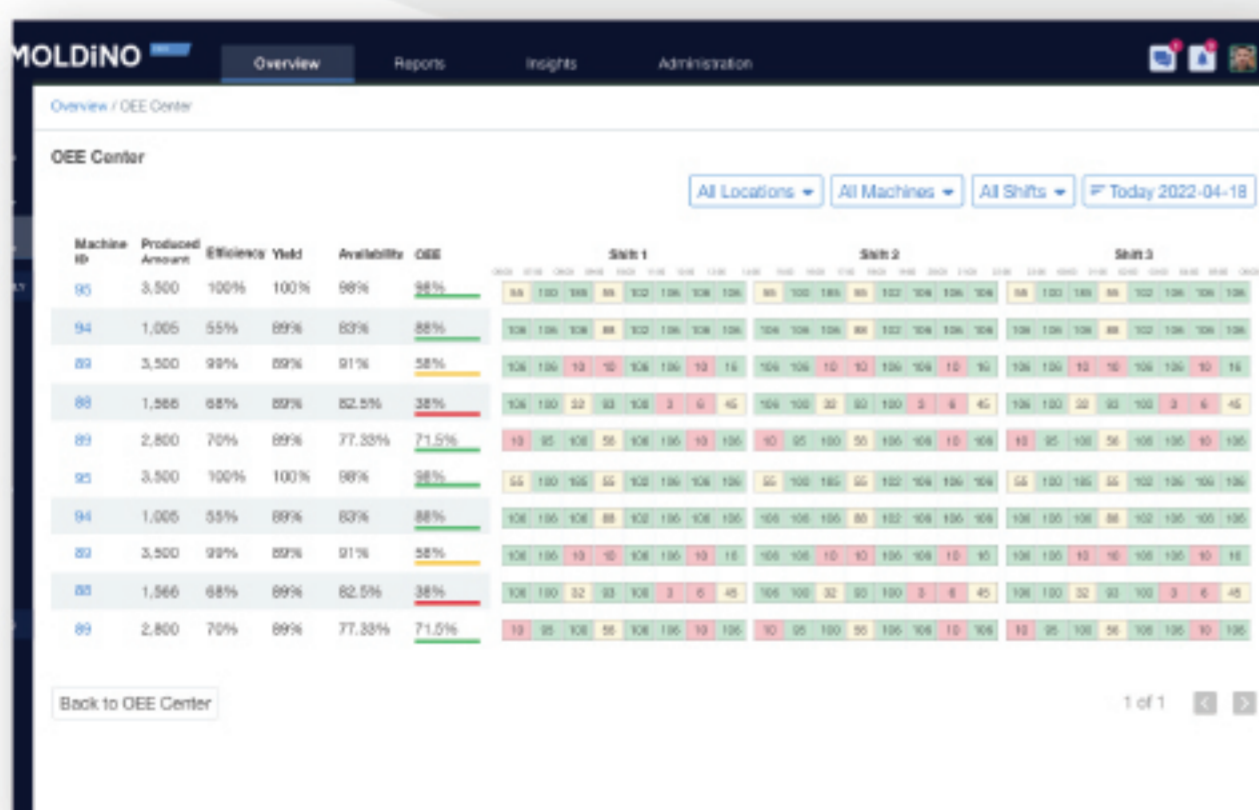
Quality Management

The system runs all incoming data through an iterative process of detecting production anomalies to take the appropriate preventive actions, analyzing the root causes behind quality issues and complications.



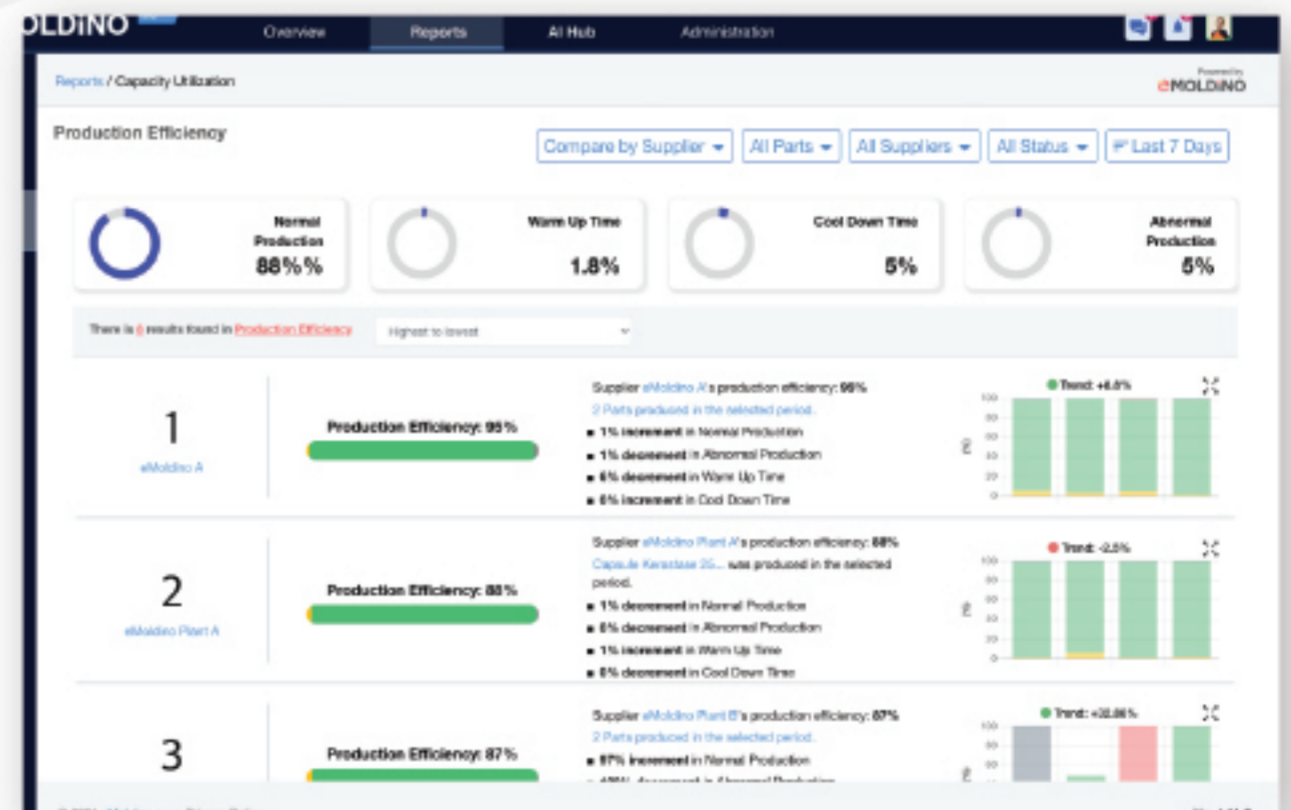
Preventive Maintenance

The preventive maintenance feature maximizes equipment availability while minimizing product defects by notifying users of maintenance alerts when toolings have reached or are close to approaching their determined life cycles.



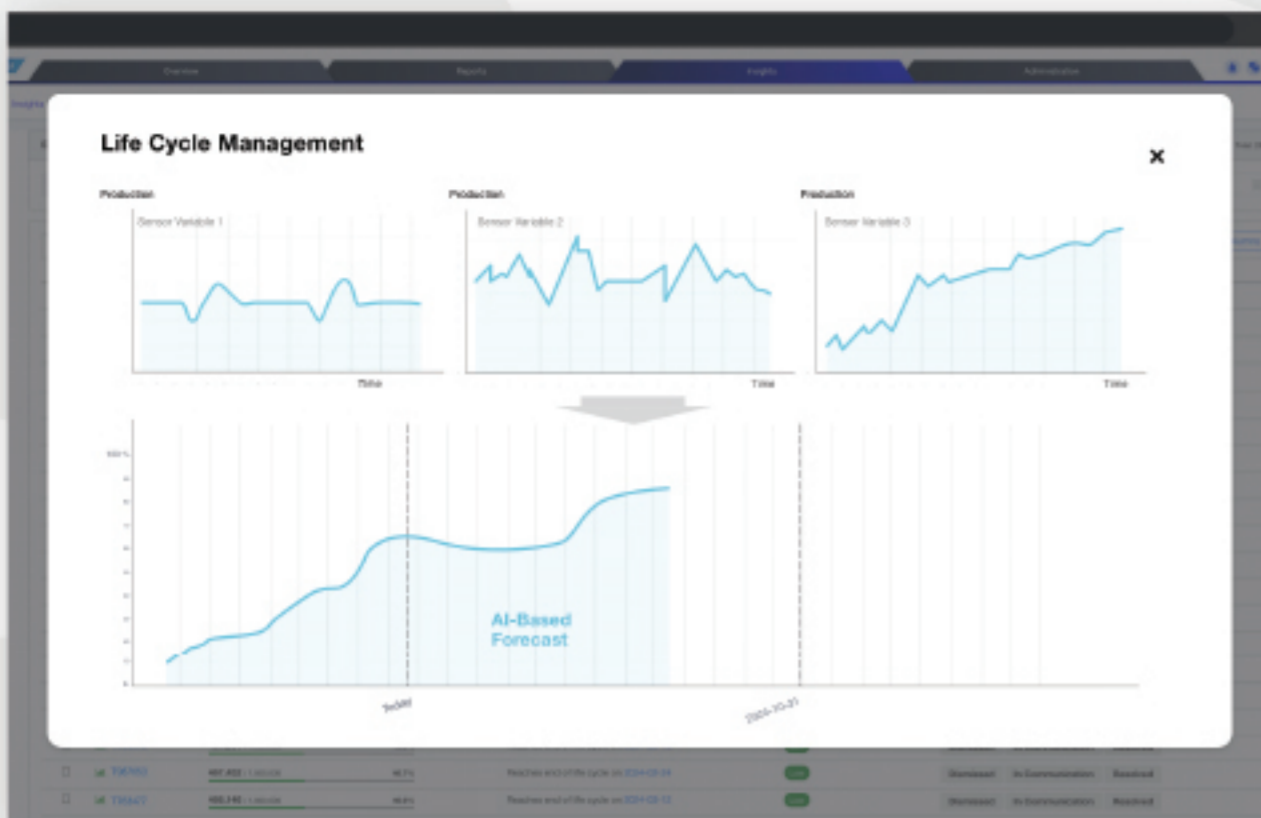
OEE (Overall Equipment Effectiveness) Center

Plant managers gain access to a deeper level of production insights on their tooling fleets availability, performance, and quality levels at any point in time.



Performance Benchmarking

Over time, the system will aggregate collected tooling data to generate analytical reports for production managers to benchmark supplier and toolmaker performance based on production efficiency.

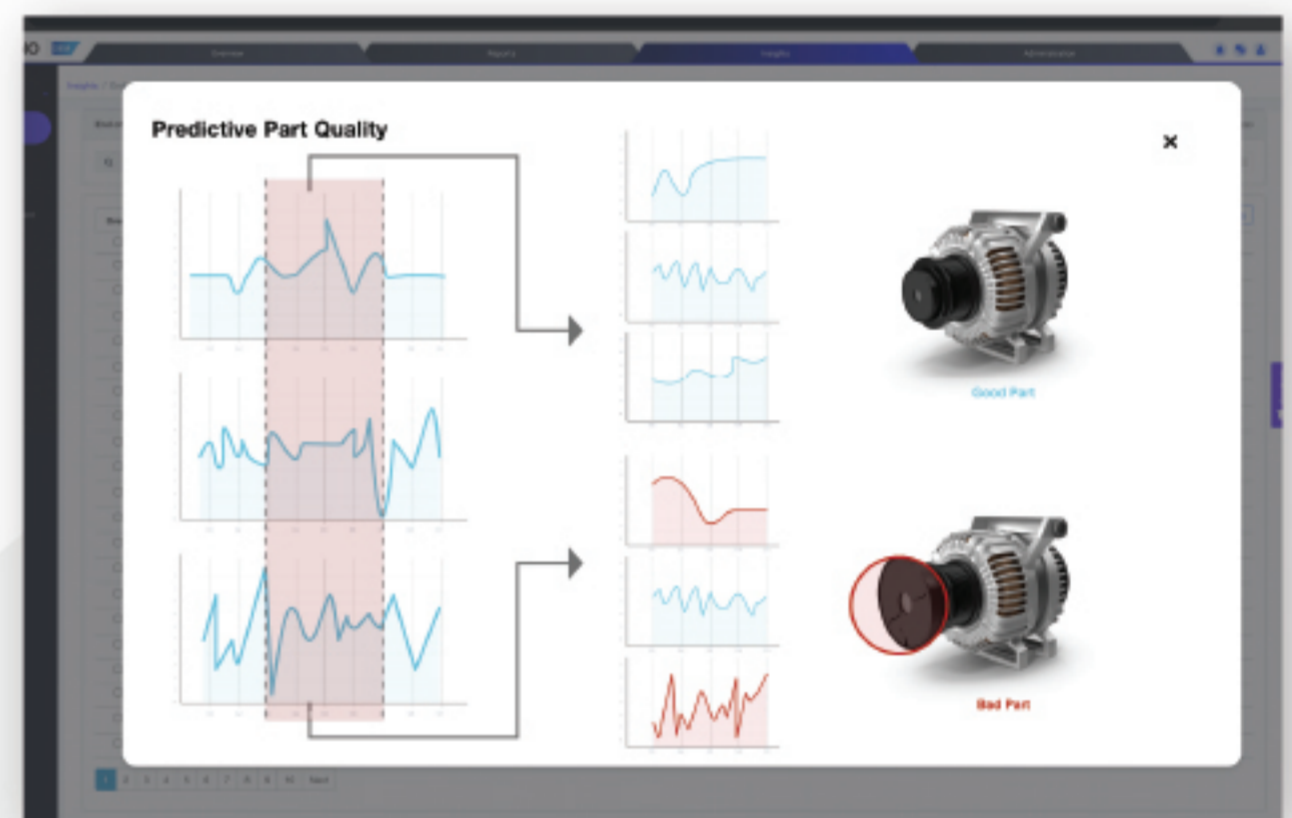
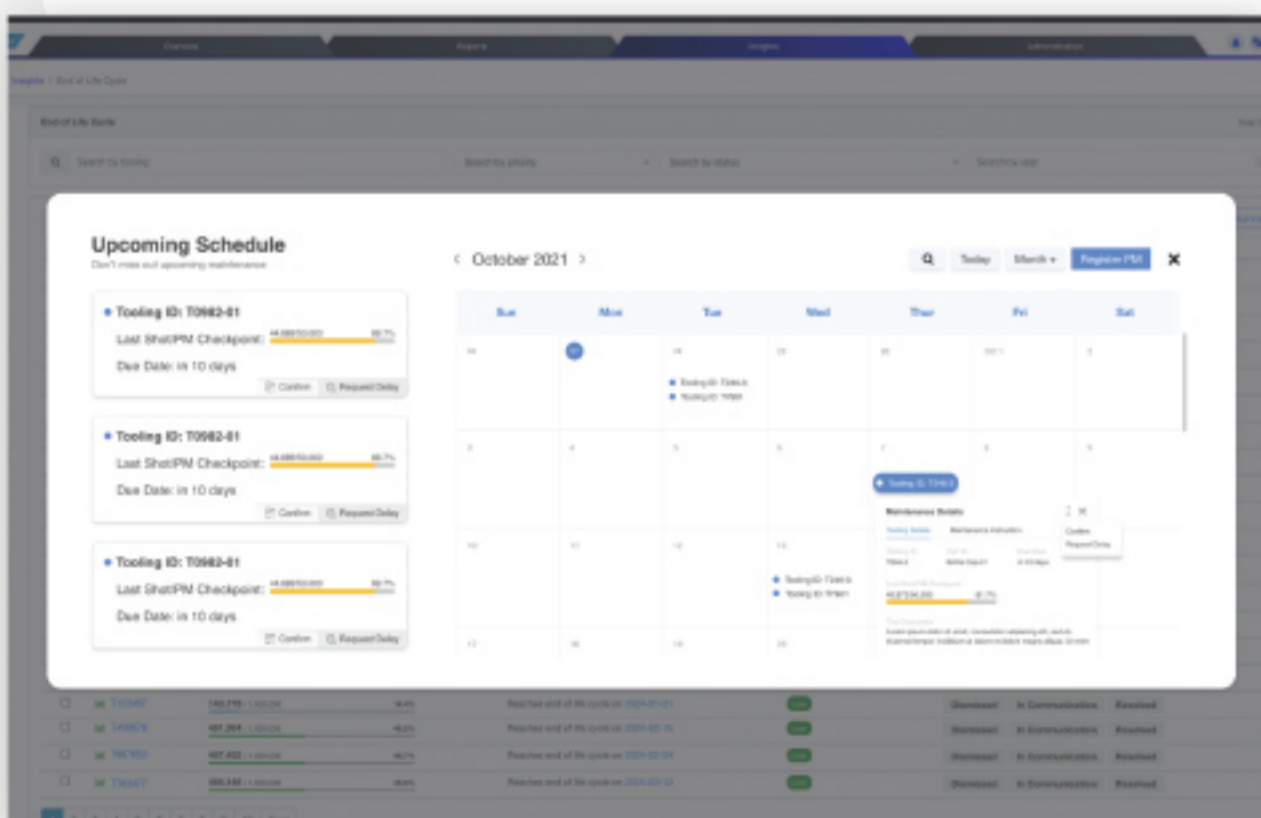


Predictive Part Quality

Using artificial intelligence and machine learning, the system will analyze historical data patterns and forecast part quality, helping reduce downtime and lower reject rates.

Life Cycle Management

Accurately predict the end of a tooling's life cycle using asset utilization and capacity rates. Machine operators can be better equipped to plan for refurbishments and maintenance beforehand and immediately be notified of any changes to a tooling's health.



Predictive Maintenance

Closely monitor the operating statuses of any assets using condition monitoring techniques to predict the occurrence of a failure before it happens, ultimately reducing unnecessary repair costs, maintenance turn times, and unexpected downtime.

Process Change Detection

Quickly detect abrupt changes or adjustment made to any tools to effectively source root causes of inefficiencies, bottlenecks, and production setbacks.

38%

increase in production cost saving

25%

increase in overall production output

3X

additional production capacity

50%

reduction of new mold purchases per annum



Company

eMoldino Co., Ltd.

eMoldino is an enterprise-level solutions provider that specializes in cultivating digital transformation in the supply chain of Fortune 500 and major manufacturing partners worldwide. By utilizing cutting-edge technologies, such as AI and machine learning, eMoldino delivers data-driven business intelligence to lead the industry 4.0 movement.

Our mission is to help global manufacturers rethink supply chain management, driving true corporate innovation and bringing customer experience into the cycle.

Take the next step forward with eMoldino!

Locations

United States

(+1) 313 879 0899

South Korea

(+82) 70 4739 7777

France

(+33) 09 70 40 5807

sales@emoldino.com

www.eMoldino.com

*Proprietary & Confidential Reclaimer

V.03