



YOUR IN-HOUSE THERMO LIGNUM[®] WARMAIR SYSTEM



FROM ART TO ARCHITECTURE

The Thermo Lignum® WARMAIR method

The Thermo Lignum® Process is based on the scientific conclusion that insects are incapable of surviving exposure to raised temperatures over and beyond a given period. Depending on the insect we work with a core temperature target of 47 to 55 °C which is held over at least one hour. As a consequence the insect protein is damaged to such an extent that any survival is impossible.

The key feature of the Thermo Lignum® WARMAIR method however, is not the application of temperature, but the computer controlled air humidity throughout the process. This guarantees a very gentle treatment even for the most sensitive art objects without the risk of damages. Since 1988 the Thermo Lignum® WARMAIR method is the optimum solution to completely eradicate insects pests and dry rot in objects of any type and size, from sensitive works of art to and including entire building structures. Wood pests, like the Common Furniture Beetle (Anobium

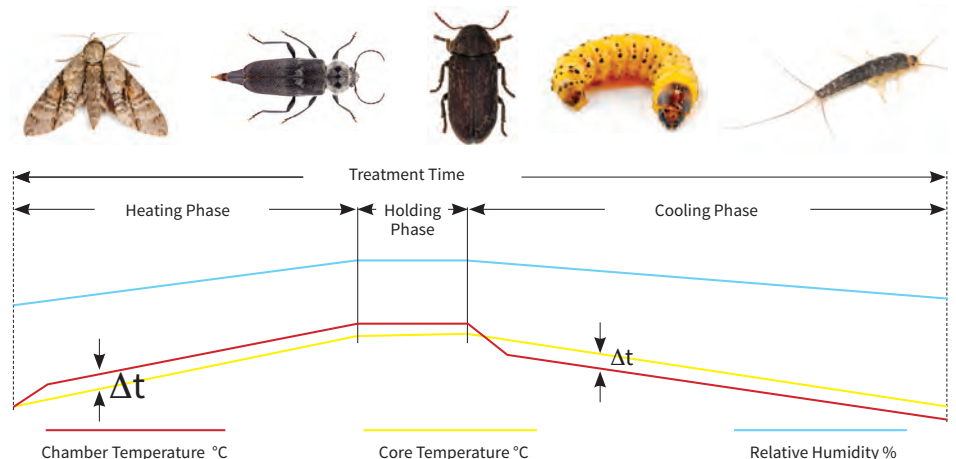
ECO-CHECK: WATER AND WARM AIR NOTHING ELSE.

- Non-Toxic
- 100 % CO²neutral
- Short Treatment Period (16 - 24 hrs)
- Individual Treatment Process for each Object Type
- Low Consumption of Water and Energy
- Max. Temp. 52° - 57° C (depending on species and object)
- Harmless for your Valuable Originals



Punctatum or plain Woodworm), Powder post Beetle, House Longhorn Beetle, Moths or Carpet Beetle, Book Lice and other damage inflicting insects are all equally **eradicated** in all their life cycle stages, **from egg, via, larva, pupa to adult beetle.**

The Thermo Lignum® WARMAIR method is the optimum solution to completely eradicate insects pests and dry rot in objects of any type and size, from sensitive works of art to and including entire building structures.



The Thermo Lignum[®] System

100 % Ecological - 100 % Reliable - 100 % Safe

FOR MUSEUMS, STORAGE FACILITIES, COLLECTIONS, GALLERIES, ARCHIVES AND THEATERS there are many advantages in having a dedicated in-house Thermo Lignum[®] WARMAIR system designed for their specific needs.



BENEFITS

- Designed for your specific needs
- Ready for use on site at any time
- Quick and efficient treatment of your precious objets
- Average treatment cycle no more than 24 hours
- Safe eradication of all insect pests at all stages of development guaranteed
- 100 % ecological and CO2 neutral
- Free of toxins, working without any chemicals
- Objects can return to storage or exhibition immediately after treatment
- System operates extremely cost efficient. Average consumption of a 24 h cycle: 100 kW/h electricity and 100 litres of water
- Optional: special filter to decontaminate the objects if required



FROM ART TO ARCHITECTURE

The Components of Your Thermo Lignum® System



YOUR THERMO LIGNUM® SYSTEM CONSISTS OF THREE COMPONENTS

1. THE CHAMBER

Your treatment needs and the site specific circumstances determine the type and volume of the chamber. This can range from 10 to 100 cubic metres.

You can choose between hinged and sliding doors. The ideal chamber is one with two doors because it can serve as a sluice which releases all treated and thus 100% decontaminated objects into a pest free area.

In between treatment cycles the chamber can be used as a holding area.

2. THE PROCESSOR

The processor is the heart of the Thermo Lignum® system and is connected directly to the chamber.

It houses all the required ventilation components, the heating and humidification units as well as the cabinet with all electrical and electronic devices.

The processor weighs about 200 to 300 kg and is placed, for technical reasons, close to the chamber, either on the side of, over or under the chamber.

3. THE OPERATING PANEL

You will operate your Thermo Lignum® chamber and supervise the live treatment cycles via a touch panel integrated in one of the chamber front panels or via a PC.



VISIT US ON



Space Requirements

for Your Thermo Lignum® System



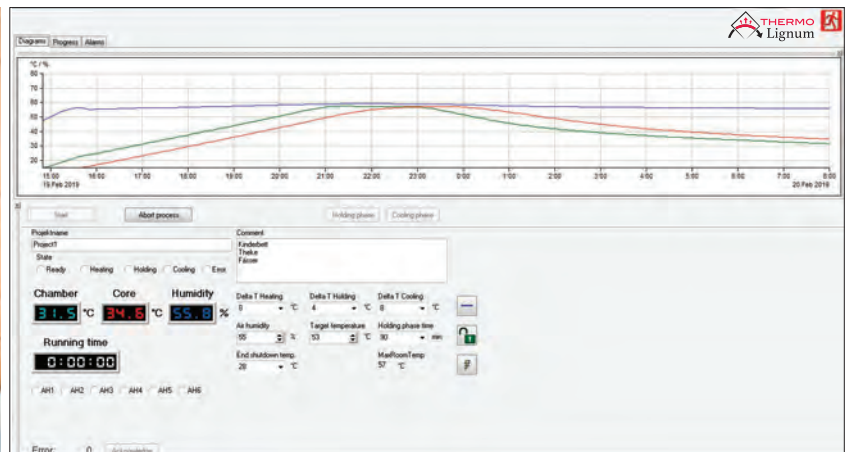
REQUIREMENTS

- Minimum dimensions of the chamber:
LxWxH 2.50x2.00x2.00 metres
- Minimum dimensions of the processor
LxWxH 2.20x1.00x1.50/2.30 metres
- (H with/without installed switch and distribution box)
- Electricity supply 400V-32A
- Water supply [1/2" with minimum pressure 2 Bar]
- Drainage in floor
- Fresh air supply (from the processor directly to the building exterior via 150mm hose)
- Room ventilation with fresh air required
- Exhaust air connection to the outside or ventilation system

THE ALTERNATIVE: RENT A PROCESSOR

If you have limited capital resources, or if you only have more infrequent treatment requirements in any given year, you have the option to simply install a Thermo Lignum® chamber and rent in the processor if and when needed.

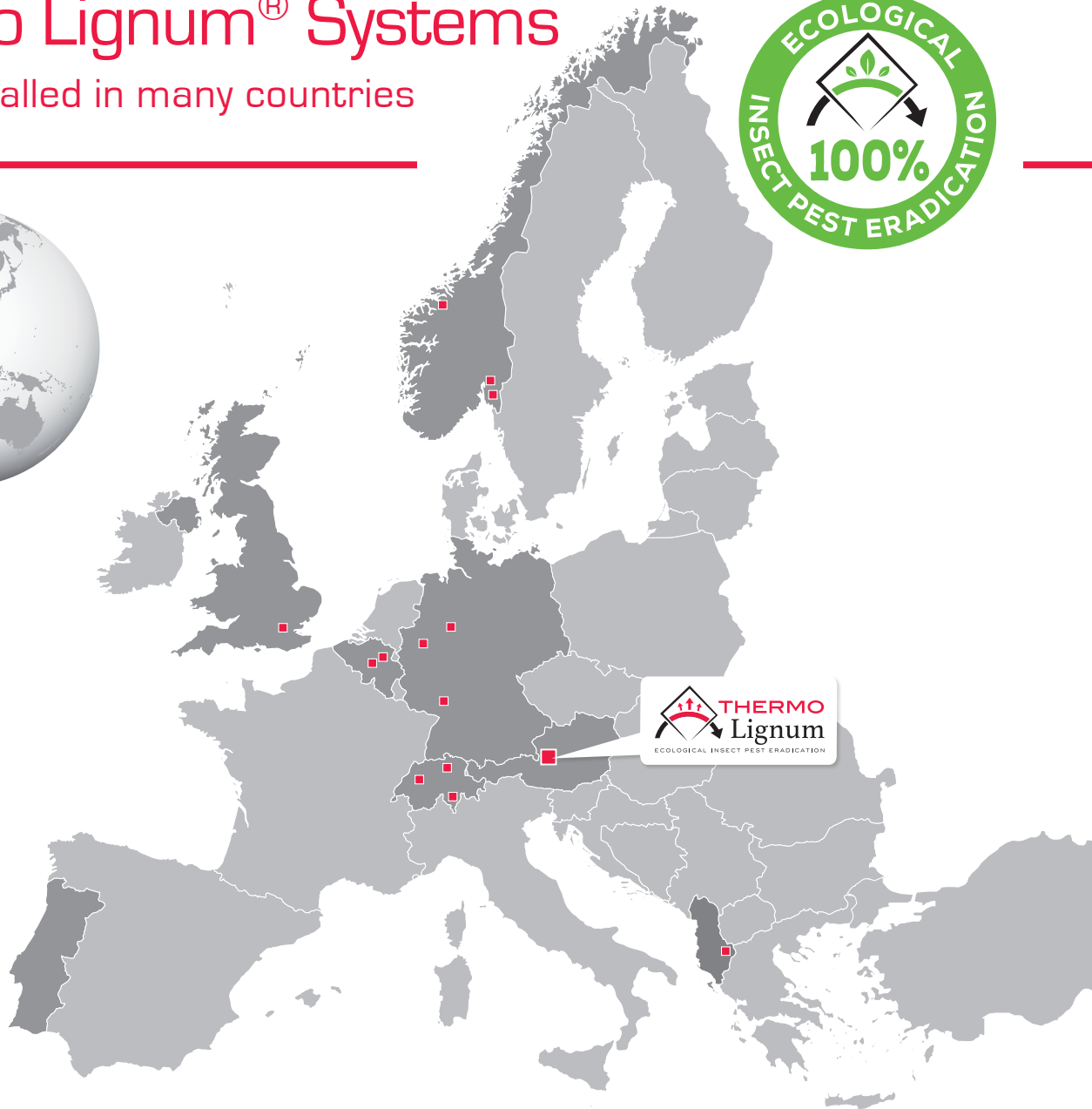
One of our technicians will come and connect the processor to your existing on site chamber in no time, and treatments can start immediately after. In the interim, your chamber can be used as a quarantine room.



ECOLOGICAL INSECT PEST ERADICATION

Thermo Lignum® Systems

already installed in many countries



THERMO LIGNUM INTERNATIONAL GMBH

Scherenbrandtnerhofstraße 6 • 5020 Salzburg • T +43 662 87 38 30 • info@thermolignum.at

WWW.THERMOLIGNUM.COM